

Surface Mount Directional Coupler

50Ω 5 to 500 MHz

LRDC-10-1J+ LRDC-10-1J



CASE STYLE: QQQ569
PRICE: \$15.95 ea. QTY (1-9)

+ RoHS compliant in accordance
with EU Directive (2002/95/EC)

The +Suffix identifies RoHS Compliance. See our web site
for RoHS Compliance methodologies and qualifications.

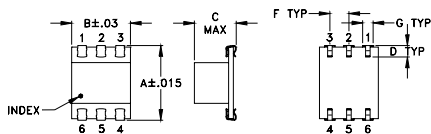
Maximum Ratings

Operating Temperature	-40°C to 85 °C
Storage Temperature	-55°C to 100°C

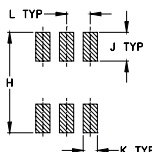
Pin Connections

INPUT	6
OUTPUT	1
COUPLED	4
GROUND	2,5
ISOLATE (DO NOT USE)	3

Outline Drawing



PCB Land Pattern

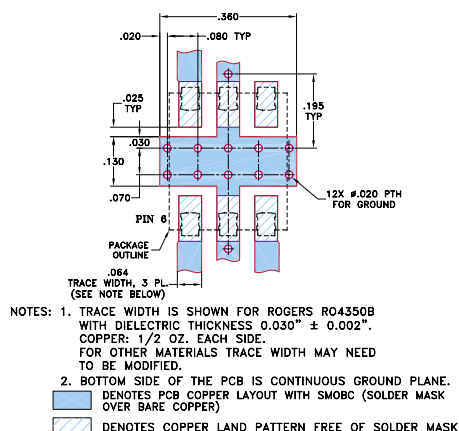


Suggested Layout,
Tolerance to be within ±.002

Outline Dimensions (inch)

A	B	C	D	E	F	G
.400	.31	.200	.10	.10	.100	.050
10.16	7.87	5.08	2.54	0.25	2.54	1.27
H	J	K	L	M	wt	
.420	.120	.060	.100	.020	grams	
10.67	3.05	1.52	2.54	0.51	0.55	

Demo Board MCL P/N: TB-31 Suggested PCB Layout (PL-087)



Features

- low mainline loss, 0.9 dB typ.
- high directivity, 30 dB typ.
- aqueous washable
- J-leads for strain relief and excellent solderability

Applications

- VHF/UHF
- reflective power measurements
- communications
- signal sampling

Directional Coupler Electrical Specifications

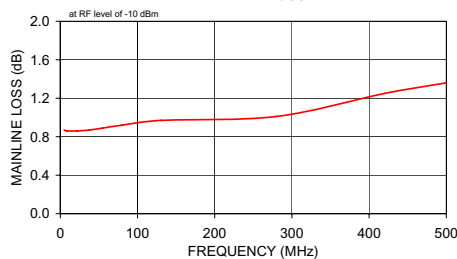
FREQ. (MHz)	COUPLING (dB)		MAINLINE LOSS ¹ (dB)						DIRECTIVITY (dB)						VSWR (:1)	POWER INPUT, W	
	Nom.	Flatness	L		M		U		L		M		U			Typ.	L
f _L -f _U			Typ.	Max.	Typ.	Max.	Typ.	Max.	Typ.	Min.	Typ.	Min.	Typ.	Min.	Typ.	Max.	Max.
5-500	10.7±0.5	±0.5	0.9	1.4	0.9	1.4	1.2	1.9	31	25	30	20	25	16	1.2	1.0	1.0

L = low range [f_L to 10 f_L] M = mid range [10 f_L to f_U/2] U = upper range [f_U/2 to f_U]
1. Mainline loss includes theoretical power loss at coupled port.

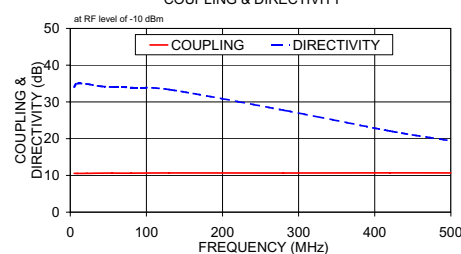
Typical Performance Data

Frequency (MHz)	Mainline Loss (dB) In-Out	Coupling (dB) In-Cpl	Directivity (dB)	Return Loss (dB)		
				In	Out	Cpl
5.00	0.87	10.56	34.05	32.58	21.08	21.19
9.00	0.86	10.55	34.98	34.24	21.38	21.44
22.00	0.86	10.57	34.87	34.86	21.43	21.53
38.00	0.87	10.61	34.30	33.52	21.31	21.52
55.00	0.89	10.62	34.06	31.49	21.16	21.52
80.00	0.92	10.61	33.94	28.84	20.90	21.53
130.00	0.97	10.68	33.37	25.10	20.17	21.41
280.00	1.01	10.66	27.76	19.24	17.58	20.72
420.00	1.25	10.69	22.09	16.25	15.45	19.95
500.00	1.36	10.67	19.44	15.06	14.47	19.60

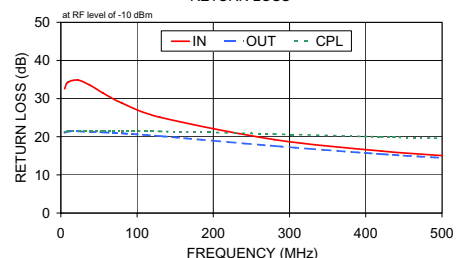
LRDC-10-1J
MAINLINE LOSS



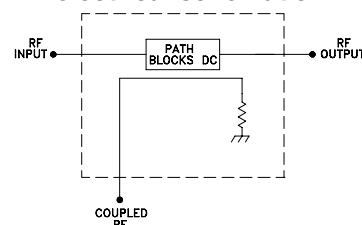
LRDC-10-1J
COUPLING & DIRECTIVITY



LRDC-10-1J
RETURN LOSS



electrical schematic



Mini-Circuits®
ISO 9001 ISO 14001 CERTIFIED

ALL NEW
minicircuits.com

P.O. Box 350166, Brooklyn, New York 11235-0003 (718) 934-4500 Fax (718) 332-4661 For detailed performance specs & shopping online see Mini-Circuits web site



The Design Engineers Search Engine Provides ACTUAL Data Instantly From MINI-CIRCUITS At: www.minicircuits.com

RF/IF MICROWAVE COMPONENTS

REV. B
M102713
LRDC-10-1J
WZ/TD/CP
070523